



Swing Door Door-Mount Sensor

PRO SWING ELITE



Elite Safety Door-Mounted Easy Installation
Maintenance Free Infrared Presence Detection
Wide Area No Header Mount Needed Always On

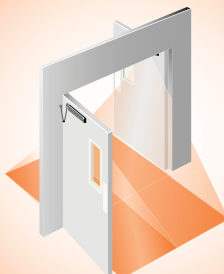
The Optex Pro-Swing Elite is designed to detect moving or stationary people in the swing path of the door. The Optex Pro-Swing Elite stays active even when the door is in motion, providing safety all of the time!

Applications

Single Swing



Dual Egress (Hospitals)



Simultaneous Pair



Safety

The presence detection feature assures a safety signal is present at the door control in the event a person or an object is within the swing-path of an automatic swinging door. When a person or object is detected, the sensor will slow, stop or reverse the door depending upon the situation.

Quality

Optex automatic door sensors guarantee premium performance and include a 3-year full replacement warranty.

Design

The modern style of the Pro-Swing Elite will blend beautifully for use in any setting.

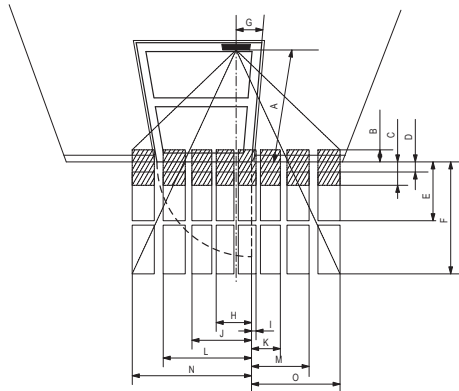
All Conditions

Variable sensitivity adjustments make this sensor suitable for every application including extreme weather conditions.

Advantages

- **Full-time Presence Detection** - The advantage of the door-mounted Pro-Swing Elite is that the presence detection stays on even when the door is in motion. The Pro-Swing Elite can detect a person or object at any point in the doors' swing path, providing complete safety and convenience for swinging doors.
- **Large and adjustable Detection Area ensures safety** - The Pro-Swing Elite has a large detection area which can detect beyond the normal area around the moving part of the door. The sensor creates a layer of awareness around the door to ensure safety.
- **No-Overhead Safety Sensor Required** - since the Pro-Swing Elite provides a full detection pattern that covers the entire swing of the doors in full open and full close position, there is no need for an overhead safety sensor.
- **Knowing Act Doors** - This system satisfies the requirement for secondary activation sensor. No additional activation sensor required.

Sensing Area

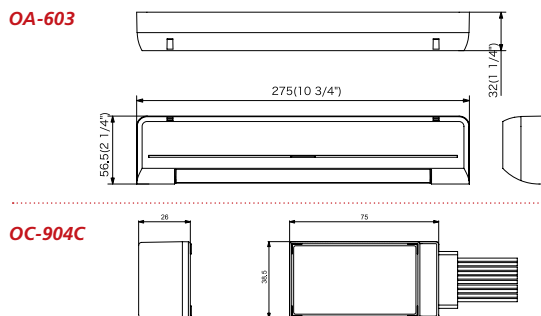


This illustration depicts the area created by the infrared technology. Actual detection may vary depending upon environmental conditions.

Sensing area chart

A	2000 (6'7")	2300 (7'6")
B	186 (7")	214 (8")
C	360 (1'2")	414 (1'4")
D	152 (6")	175 (7")
E	840 (2'9")	966 (3'2")
F	1650 (5'5")	1898 (6'2")
G	252 (10")	
H	583 (1'11")	645 (2'1")
I	89 (3")	141 (6")
J	911 (3')	1010 (3'4")
K	407 (1'4")	506 (1'8")
L	1275 (4'2")	1428 (4'8")
M	770 (2'6")	924 (3')
N	1684 (5'6")	1900 (6'3")
O	1180 (3'10")	1395 (4'7")

Outer Dimensions



Swing Door Elite System Specifications

Pro-Swing Elite Sensor

Model	OA-603
Cover Color	Black, Silver
Mounting Height	2.0m (6'7") to 2.5m (8'2")
Detection Area	See chart
Detection Method	Active Infrared Reflection (Presence Detection Type)
Detection Angle	Threshold Area ± 5 (Inside & Outside); Swing Area ± 5 (Inside & Outside)
Adjustments	Green: Standby
Operation Indicator	Blinking Red: Threshold Area Detection Active Red: Swing Area Detection Active Blinking Yellow: Learning
Current Draw	120mA Max
Response Time	<0.3 seconds
Operating Temp.	-20°C to +55°C (-4°F to +131°F)
Weight	230g (8.2oz.)

Pro-Swing Elite Controller

Model	OC-904C
Power Supply	12-24V AC, 12-30V DC
Current Draw	500mA max.*
Output	- Activate Output: Form A Relay 50V, 0.1A (Resistance Load) - Safety Output: Form C Relay 50V, 0.1A (Resistance Load) - Stall Output: Form C Relay 50V, 0.1A (Resistance Load)
Relay Hold Time (Safety Output Only)	0.5 to 10s
Response Time	<0.3 seconds
Operation Indicator	Green: Standby Red: Door Opening Orange: Lockout
Operating Temp.	-20°C - +55°C (-4°F to +131°F)
Weight	50g (1.8oz.)

* When a unit of the OA-603 and OC-904C used.

3882 Del Amo Blvd. Suite 604
Torrance, CA 90503
Toll Free: 800 877-6656

www.ot-inc.com

OPTEX
TECHNOLOGIES, INC.

member **BHMA**
builders hardware manufacturers association